



AQUIND Limited

AQUIND INTERCONNECTOR

Additional Viewpoint Location Plan and
Additional Viewpoints Part A Figures 15.57 –
15.59

The Planning Act 2008

The Infrastructure Planning (Applications: Prescribed Forms and Procedure) Regulations
2009 – Regulation 8(1)(c)

Document Ref: 7.7.16

PINS Ref.: EN020022

AQUIND Limited

AQUIND INTERCONNECTOR

Additional Viewpoint Location Plan and
Additional Viewpoints Part A Figures 15.57 –
15.59

PINS REF.: EN020022

DOCUMENT: 7.7.16

DATE: 25 JANUARY 2021

WSP

WSP House

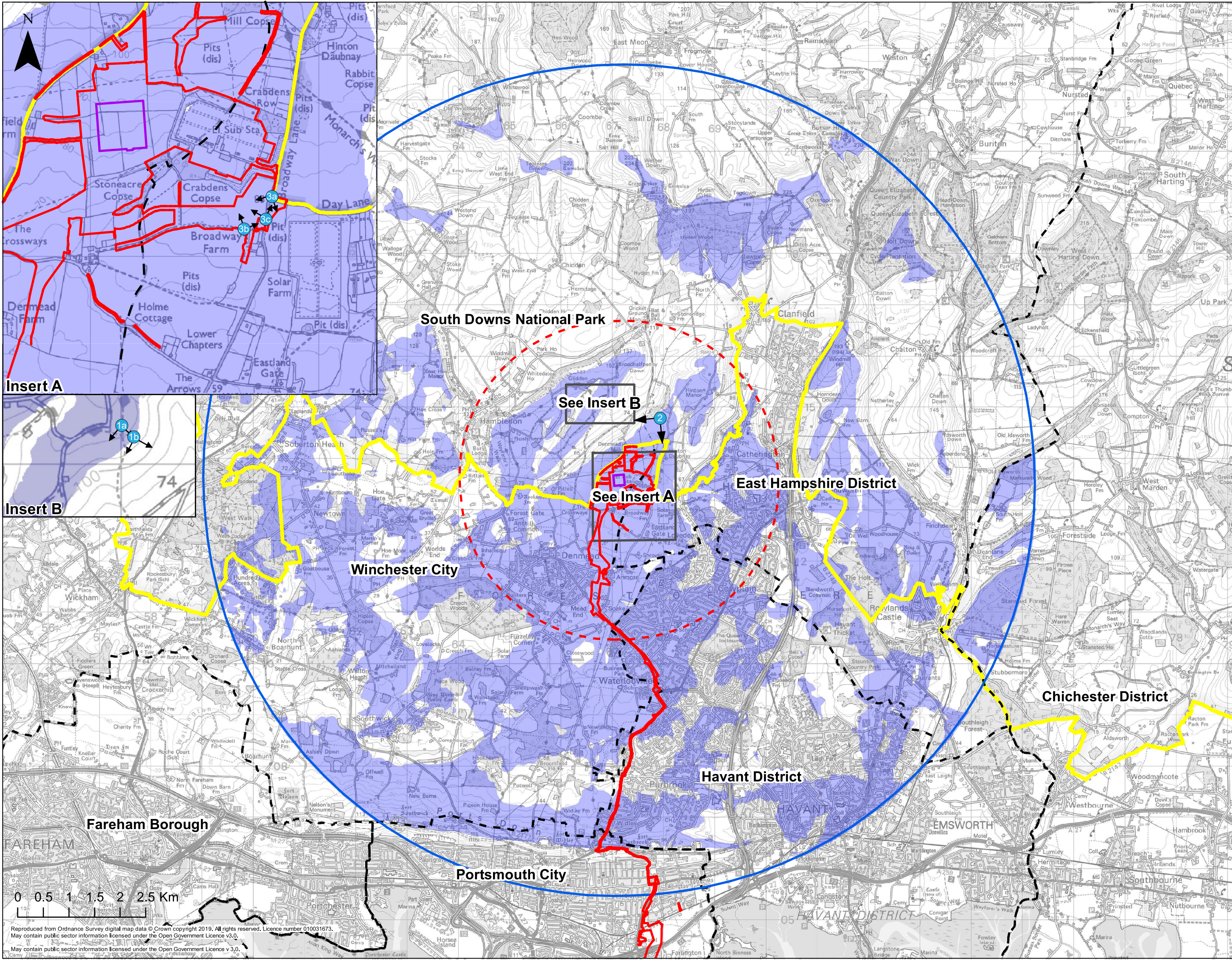
70 Chancery Lane

London

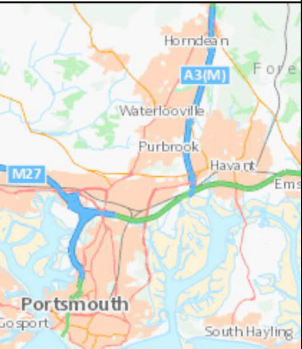
WC2A 1AF

+44 20 7314 5000

www.wsp.com



- Key**
- Order Limits
 - Approximate Converter Station Location
 - 8km Study Area
 - 3km Study Area
 - - - District Boundary
 - South Downs National Park
 - Additional Viewpoint Location
 - Zone of Theoretical Visibility



Infrastructure Planning (Applications: Prescribed Forms & Procedure) Regulations 2009 - Regulation 5(2)(a)

REV	DATE	BY	DESCRIPTION	CHK	APP
01	08/12/2020	JL	FIRST ISSUE	DW	MB

DRAWING STATUS: **FINAL**

wsp
 WSP House, 70 Chancery Lane, London, WC2A 1AF, UK.
 T+ 44 (0) 20 7314 5000
 wsp.com

AQUIND

PROJECT: AQUIND Interconnector

Figure 15.57
 Additional Viewpoint Location Plan

SCALE AT 1:65,000	CHECKED: DW	APPROVED: MB
PROJECT NO: EN020022	DESIGNED: JL	DRAWN: JL
DRAWING NO:	DATE: 08/12/2020	REVISED:

Reproduced from Ordnance Survey digital map data © Crown copyright 2019. All rights reserved. Licence number 010031673.
 May contain public sector information licensed under the Open Government Licence v3.0.

\\uk.wspgroup.com\central_data\Projects\02\00xv\02\00616 - Aquind VO No.3\A\DCOD_EIA5_WIP4_Landscape and Visual (LVA)\Visualisations\Design\A1_00degree_HFDV_sheets_VP1_VP17



Baseline Panorama

This image provides landscape and visual context only

© WSP UK Ltd
Viewpoint location: (E) 466999 (N) 115232
See Figure 15.57 for Viewpoint Location Plan
Horizontal field of view: 90° (cylindrical projection)

Date and time of photography: 19th November 2020, 14:47 pm
Camera & lens: Canon 6D, 50mm f1.4 prime lens
Distance from camera to Option B(ii): 1.61km, bearing 210°

Infrastructure Planning (Applications: Prescribed Forms and Procedure)
Regulations 2009 - Regulation 5 (2)(a)
This figure is to be printed at A1 width x A4 height: 841 x 297 mm



Drawn: RT Checked: MB Approved: AF
Date 16/12/2020
Additional Viewpoint 1a: Baseline Winter
AQUIND Interconnector Dwg No: EN 020022-ES-15.58A
Figure 15.58A

\\uk.wspgroup.com\central_data\Projects\62100xxx\62100616 - Aquind VO No.3\A DCOID - EIA\5. WIP\4. Landscape and Visual (LVA)\Visualisations\InDesign\A3_40degree_HFOV_sheets_r2 - Summer_VP18 - VP22



Viewpoint location: (E) 466999 (N) 115232
Date and time of photography: 19th November 2020, 14:47 pm
Camera & lens: Canon 6D, 50mm f1.4 prime lens
Horizontal field of view: 40°
Print at A3 or view full frame on a 24" monitor

Distance from camera to Option B(ii): 1.61km, bearing 174°
For Viewpoint Location Plan See Figure 15.57

Infrastructure Planning (Applications:
Prescribed Forms and Procedure)
Regulations 2009 - Regulation 5 (2)(a)

Drawn: RT Checked MB Approved: AF
Date 16/12/2020
Dwg No: EN 020022-ES-15.58B



**AQUIND Interconnector
Additional Viewpoint 1a:
Baseline Winter
Figure 15.58B**

\\uk.wspgroup.com\central\data\Projects\62100xxx\62100616 - Aquind VO No.3\A.DCOID. EIA\5. WIP\4. Landscape and Visual (LVIA)\Visualisations\InDesign\A3_27degree_HFOV_sheets_VPA & VPB Photomontages



Viewpoint location: (E) 466999 (N) 115232
Date and time of photography: 19th November 2020, 14:47 pm
Camera & lens: Canon 6D, 50mm f1.4 prime lens
Horizontal field of view: 27°
Print at A3 or view full frame on a 24" monitor

Distance from camera to Option B(ii): 1.61km, bearing 174°
For Viewpoint Location Plan See Figure 15.57

Infrastructure Planning (Applications:
Prescribed Forms and Procedure)
Regulations 2009 - Regulation 5 (2)(a)

Drawn: RT Checked MB Approved: AF
Date 16/12/2020
Dwg No: EN 020022-ES-15.58C

 **AQUIND** 

**AQUIND Interconnector
Additional Viewpoint 1a:
Baseline Winter
Figure 15.58C**

\\uk.wspgroup.com\central_data\Projects\6210\rev62100616 - Aquind VO No.3\A\DCOD - EIA\5 - WP4 - Landscape and Visual (LVA)\Visualisations\Design\A1_30degree_HFDV_sheets_VP1 - VP17



Baseline Panorama

This image provides landscape and visual context only



Wireline Panorama

This image provides landscape and visual context only

Key

- Converter Station visible
- - - Converter Station screened by intervening objects in the view

Colours

- Option B(i)
- Option B(ii)

Viewpoint location: (E) 467021 (N) 115241, 123.4m AOD
See Figure 15.57 for Viewpoint Location Plan
Horizontal field of view: 90° (cylindrical projection)

Date and time of photography: 19th November 2020, 15:00 pm
Camera & lens: Canon 6D, 50mm f1.4 prime lens
Distance from camera to Option B(ii): 1.62km, bearing 176°

Infrastructure Planning (Applications: Prescribed Forms and Procedure)
Regulations 2009 - Regulation 5 (2)(a)
This figure is to be printed at A1 width x A4 height: 841 x 297 mm



\\uk.wspgroup.com\central\data\Projects\62100xxx\62100616 - Aquind VO No.3\A.DC.OID. EIA\5. WIP\4. Landscape and Visual (LVA)\Visualisations\InDesign\A3_40degree_HFOV_sheets_r2 - Summer_VP18 - VP22

Key
 — Converter Station visible
 - - - Converter Station screened by intervening objects in the view

Colours
 — Option B(i)
 — Option B(ii)



Wireline (Winter)

Viewpoint location: (E) 467021 (N) 115241, 123.4m AOD
 Date and time of photography: 19th November 2020, 15:00 pm
 Camera & lens: Canon 6D, 50mm f1.4 prime lens
 Horizontal field of view: 40°
 Print at A3 or view full frame on a 24" monitor

Distance from camera to Option B(ii): 1.62km, bearing 176°
 For Viewpoint Location Plan See Figure 15.57

Infrastructure Planning (Applications:
 Prescribed Forms and Procedure)
 Regulations 2009 - Regulation 5 (2)(a)

Drawn: RT Checked MB Approved: AF
 Date 16/12/2020
 Dwg No: EN 020022-ES-15.59B

wsp AQUIND
 AQUIND Interconnector
 Additional Viewpoint 1b:
 Baseline Winter
 Figure 15.59B

\\uk.wspgroup.com\central\data\Projects\62100xxx\62100616 - Aquind VO No.3\A.DCO.D. EIA\5. WIP\4. Landscape and Visual (LVA)\Visualisations\InDesign\A3_27degree_HFOV_sheets_VPA & VPB Photomontages

Key
 — Converter Station visible
 - - - Converter Station screened by intervening objects in the view

Colours
 — Option B(i)
 — Option B(ii)



Wireline (Winter)

Viewpoint location: (E) 467021 (N) 115241, 123.4m AOD
 Date and time of photography: 19th November 2020, 15:00 pm
 Camera & lens: Canon 6D, 50mm f1.4 prime lens
 Horizontal field of view: 27°
 Print at A3 or view full frame on a 24" monitor

Distance from camera to Option B(ii): 1.62km, bearing 176°
 For Viewpoint Location Plan See Figure 15.57

Infrastructure Planning (Applications:
 Prescribed Forms and Procedure)
 Regulations 2009 - Regulation 5 (2)(a)

Drawn: RT Checked MB Approved: AF
 Date 16/12/2020
 Dwg No: EN 020022-ES-15.59C

wsp AQUIND
AQUIND Interconnector
Additional Viewpoint 1b:
Baseline Winter
Figure 15.59C